

# Commute Options Training – Emergency Ride Home Program

## Voiceover Script and Notes

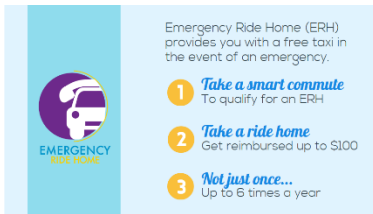
Slide 1:



Notes: \_\_\_\_\_  
\_\_\_\_\_  
\_\_\_\_\_  
\_\_\_\_\_

Music

Slide 2:



Notes: \_\_\_\_\_  
\_\_\_\_\_  
\_\_\_\_\_  
\_\_\_\_\_

Emergency Ride Home is a free program by Pierce Transit. If you or a colleague take a smart trip to work, this program is your guaranteed ride home in the case of an emergency. You can get reimbursed up to \$100 per trip and take a maximum of six emergency rides per year.

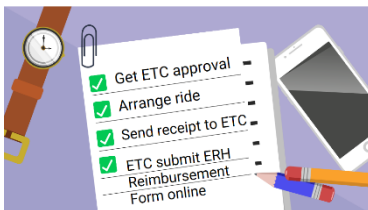
Slide 3:



Notes: \_\_\_\_\_  
\_\_\_\_\_  
\_\_\_\_\_  
\_\_\_\_\_

How does ERH work?

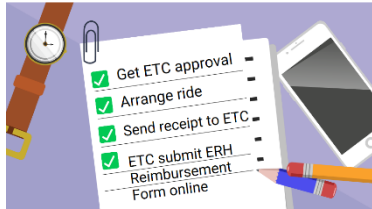
Slide 4:



Notes: \_\_\_\_\_  
\_\_\_\_\_  
\_\_\_\_\_  
\_\_\_\_\_

If a colleague needs an emergency ride home, they need to get approval from you first. It's up to your discretion to decide if their request is legitimate and reasonable. Once approved, the employee is responsible for arranging a ride through Lyft, Uber or a taxi company.

Slide 5:



Notes: \_\_\_\_\_  
\_\_\_\_\_  
\_\_\_\_\_  
\_\_\_\_\_

Once the ride is complete, the employee submits the receipt to you, and you complete the ERH Reimbursement Form found online at [PierceTrips.com](http://PierceTrips.com)

Slide 6:



Notes: \_\_\_\_\_  
\_\_\_\_\_  
\_\_\_\_\_  
\_\_\_\_\_

ERH can be used for personal or family illnesses, unexpected overtime, or a change in your planned ride home, such as your vanpool driver becoming ill.

Slide 7:



Notes: \_\_\_\_\_  
\_\_\_\_\_  
\_\_\_\_\_  
\_\_\_\_\_

You can use ERH to go home, to where your personal vehicle is located, such as a train station or park and ride or to the doctor's office. You can also make intermediate stops that relate to your emergency, such as picking up a kid to go to the doctor's office.

Slide 8:



Notes: \_\_\_\_\_

\_\_\_\_\_

\_\_\_\_\_

\_\_\_\_\_

ERH cannot be used for running personal errands, going to pre-scheduled appointments, poor weather conditions, in place of an ambulance ride, going to the hospital due to an on-the-job injury, after being terminated, or because of working late with more than one day's prior notice.

Slide 9:



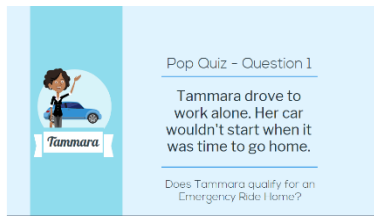
Notes: \_\_\_\_\_

\_\_\_\_\_

\_\_\_\_\_

\_\_\_\_\_

Slide 10:



Notes: \_\_\_\_\_

\_\_\_\_\_

\_\_\_\_\_

\_\_\_\_\_

Slide 11:



Notes: \_\_\_\_\_

\_\_\_\_\_

\_\_\_\_\_

\_\_\_\_\_

Slide 12:



Pop Quiz - Question 2

Elliot, who rode his bike to work this morning, noticed his tire is flat. He doesn't have a repair kit.

Does Elliot qualify for an Emergency Ride Home?


Notes: \_\_\_\_\_

\_\_\_\_\_

\_\_\_\_\_

\_\_\_\_\_

Slide 13:



Pop Quiz - Answer 2

Yes, since Elliot's bike cannot be fixed on the spot he qualifies for an Emergency Ride Home.

Don't forget to send your receipt to your ETC, Elliot!


Notes: \_\_\_\_\_

\_\_\_\_\_

\_\_\_\_\_

\_\_\_\_\_

Slide 14:



Pop Quiz - Question 3

Jerome walks to work. The weather took a turn for the worse and is now stormy for the walk back.

Does Jerome qualify for an Emergency Ride Home?

Notes: \_\_\_\_\_

\_\_\_\_\_

\_\_\_\_\_

\_\_\_\_\_

Slide 15:



Pop Quiz - Answer 3

Sorry, Jerome. ERH does not count for inclement weather.

Might be worth finding out if any coworkers live near you.

Notes: \_\_\_\_\_

\_\_\_\_\_

\_\_\_\_\_

\_\_\_\_\_

Slide 16:



**SIGN UP FOR ERH!**  
*(IT'S FREE)*

add your name

Notes: \_\_\_\_\_

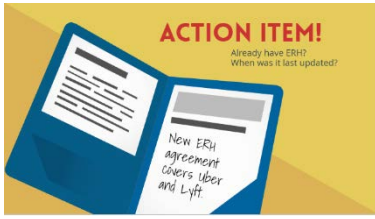
\_\_\_\_\_

\_\_\_\_\_

\_\_\_\_\_

Signing up for Emergency Ride Home is easy and free!

Slide 17:



Notes: \_\_\_\_\_

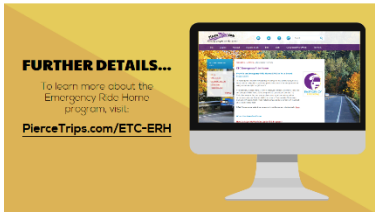
\_\_\_\_\_

\_\_\_\_\_

\_\_\_\_\_

Action item! Check with us to make sure your ERH contract is up to date. If your contract was signed prior to 2017, you'll need to re-sign as we have updated the agreement terms. Please contact us if you are not sure.

Slide 18:



Notes: \_\_\_\_\_

\_\_\_\_\_

\_\_\_\_\_

\_\_\_\_\_

Visit [PierceTrips.com/ETC-ERH](http://PierceTrips.com/ETC-ERH) to learn more about the ERH program and sign the agreement form online.

Slide 19-21: Questions, Contact, Completion form

Music